

STBLink User Manual

Last updated 2006.03.28

0. Revision History

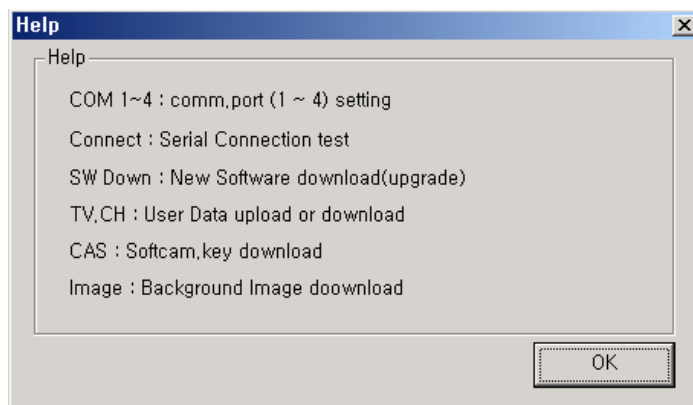
[illegible]

[STBLink 01.xx]



1. Preparation of equipment
 - Set-top Box, RS232 Cross Cable
2. Basic download Process
 - Connect RS232 cable (Cross cable) PC to STB.
 - Change to **Stand-by status** by power button(key).
 - Set COM(1~4) port, connection.
 - Click the Icon or Menu that you want to download.

3. Help



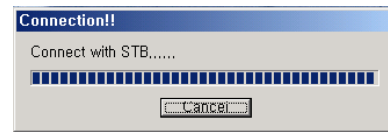
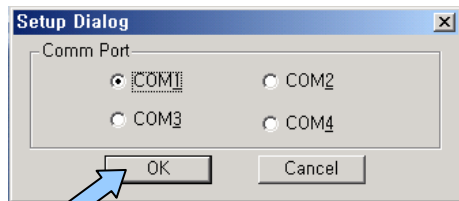
[table of contents]

1. **COM 1~4** (PC Com-port Setting)
2. **Connect** (Connection between STB to STBLink01.xx)
- 3.1 **SW Down** (Software download at Normal booting Status)
- 3.2 **SW Down** (Software download at Boot-mode Status)
- 4.1 **TV.CH** (TV, Radio CH and other information upload)
- 4.2 **TV.CH** (TV, Radio CH and other information download)
5. **CAS** (softcam.key download)
6. **Image** (Background Image download)
7. **Boot Loader** (Boot(Code) Loader download)

* reference : [pic2mpg image converter]

1. COM 1~4 (PC Com-port Setting)

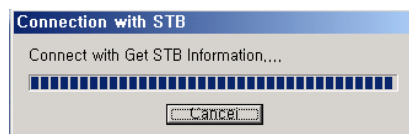
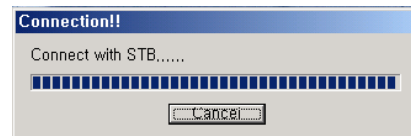
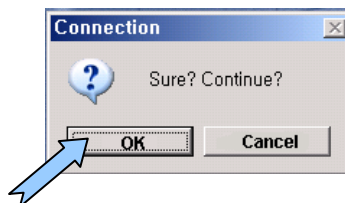
- a. Click  icon at STB standby status. (see below)



- b. if it has problem, check as below.

**2. Connect (Connection between STB to STBLink01.xx)**

- a. Click  icon at STB standby status. (see below)



Connection OK.

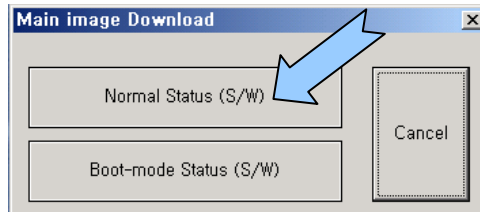
- b. if it has problem, check as below.



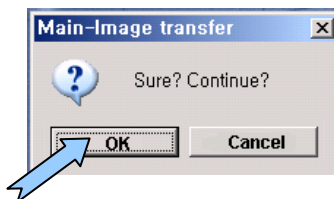
3.1 **SW Down** (Software download at Normal booting Status)

- a. Click  icon at STB standby status. (see below)

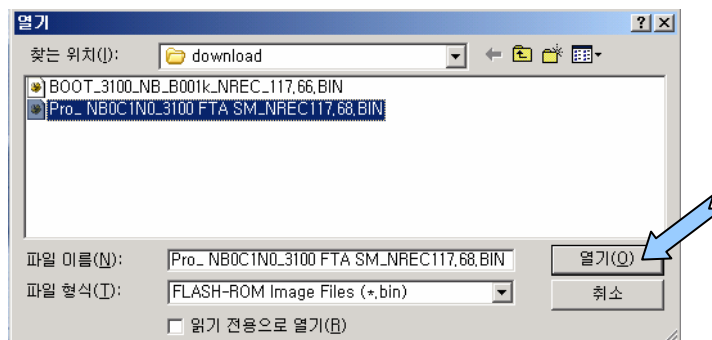
Press [Normal Status (S/W)] menu button



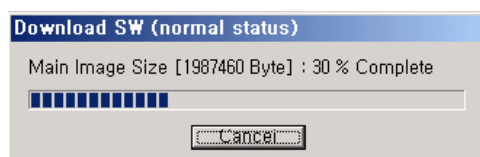
- b if you want to continue, Press “OK”. Otherwise Press “Cancel”.



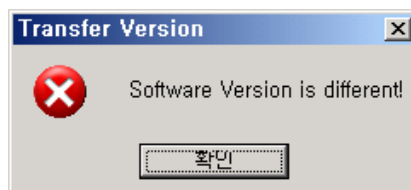
- c. choose the file(*.BIN) that you want to download.



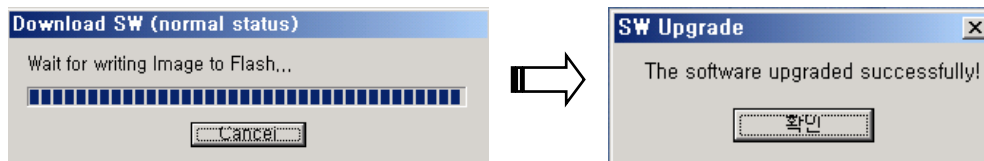
- d. if Software version is correct, it will process continuously.



- Otherwise , warning message will be display as below.



e. after main image transferred, Waiting for writing image to Flash.



f. then reboot.

3.2 SW Down (Software download at Boot-mode Status)

a. As a first step, power off->on while press ch- button on front-panel.

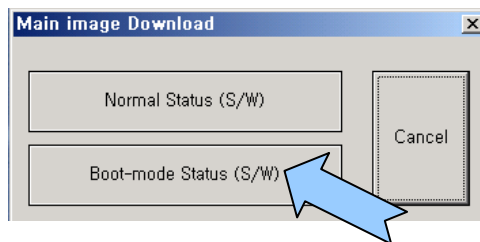
On front-panel, it will be display as below. (x = character)

00xx -> 001x -> 1 -> 001x -> 1 ... (loop continuously)

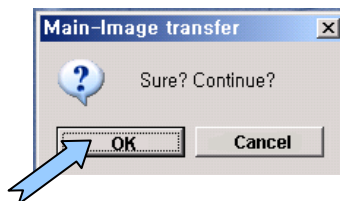


b. Click  icon. (see below)

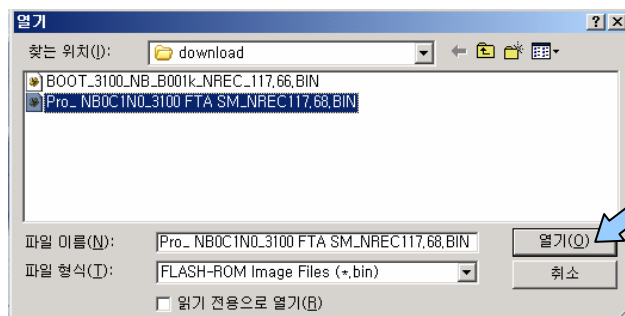
Press [Boot-mode Status (S/W)] menu button.



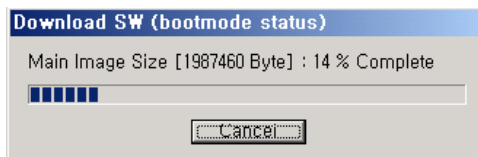
c. if you want to continue, Press “OK”. Otherwise Press “Cancel”.



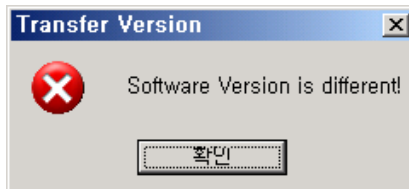
d. choose the file(*.BIN) that you want to download.



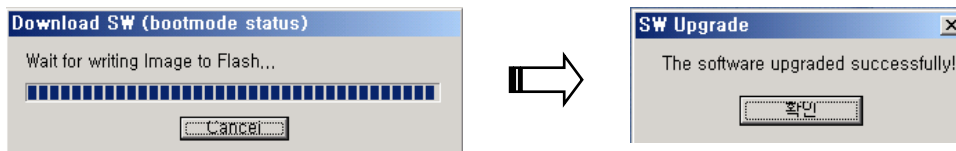
e. if Software version is same, it will process continuously.



- Otherwise , warning message will be display as below.



f. after main image transferred, Waiting for writing image to Flash.

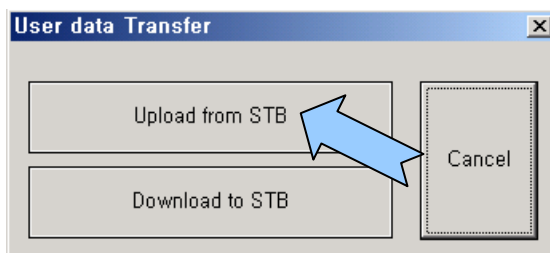


g. then reboot.

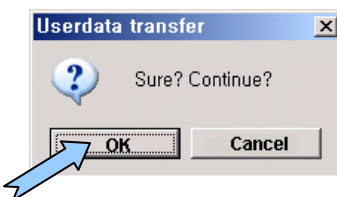
4.1 TV.CH (TV, Radio CH and other information upload)



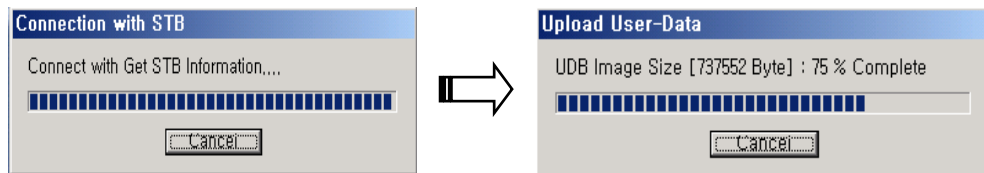
a. Click  icon at STB standby status. (see below)



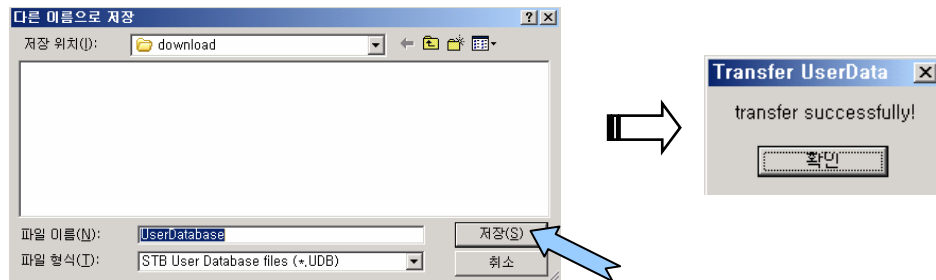
b. if you want to continue, Press "OK". Otherwise Press "Cancel".



c. connect, upload User data(TV, Radio, satellite data.. etc).

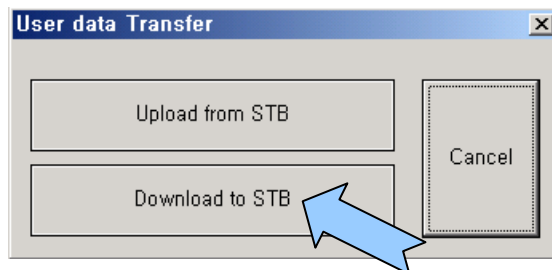


d. if all data transferred, save User-data file(*.UDB). then reboot.

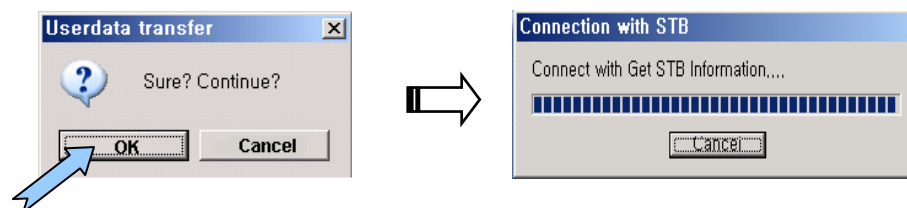


4.2 TV.CH (TV, Radio CH and other information download)

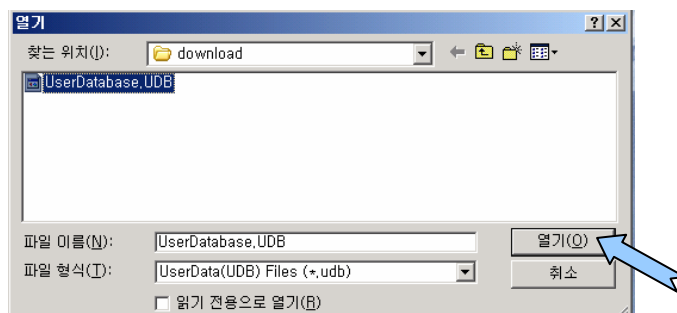
a. Click  icon at STB standby status. (see below)



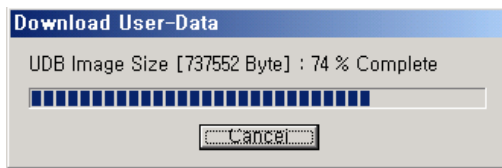
b. if you want to continue, Press “OK”. Otherwise Press “Cancel”.



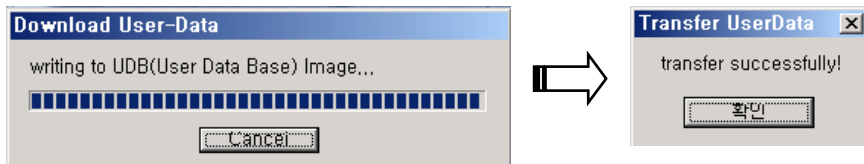
c. choose the file(*.UDB) that if you want to download.



d. downloading User data(TV, Radio, satellite data.. etc).



e. after userdata transferred, Waiting for writing image to Flash.



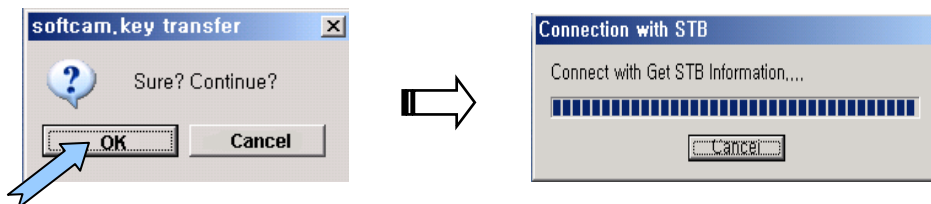
f. then reboot.

5. CAS (softcam.key download)

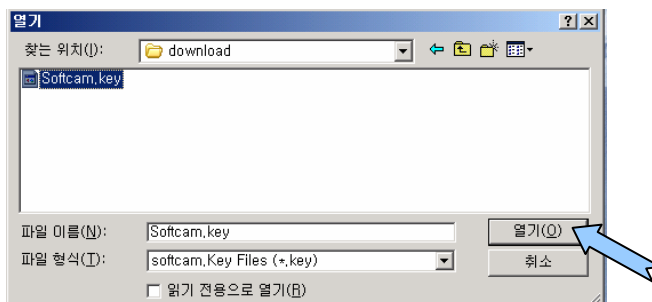


a. Click icon at STB standby status. (see below)

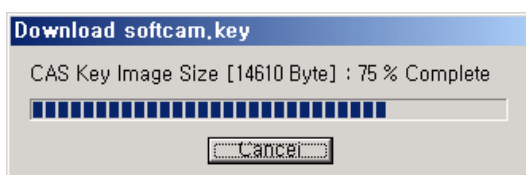
b. if you want to continue, Press "OK". Otherwise Press "Cancel".



c. choose the file(softcam.key) that if you want to download.



d. downloading softcam.key.




e. after userdata transferred, Waiting for writing image to Flash.

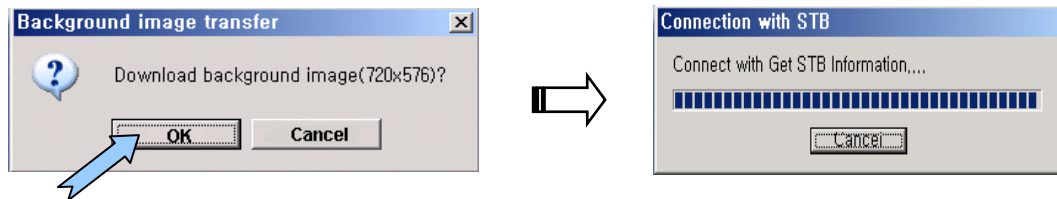


f. then reboot.

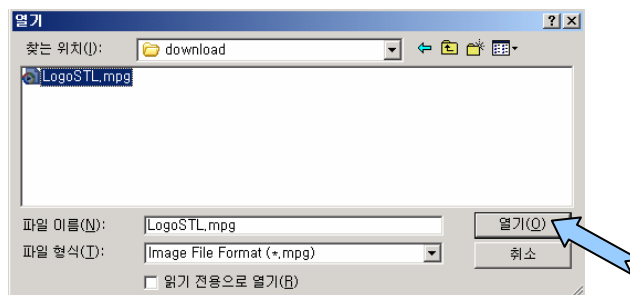
6. Image (Background Image download)

a. convert [pic, jpg, bmp, tif] to [mpg] by using **pic2mpg.exe**. (Image convert program)
 * reference pic2mpg image converter process.

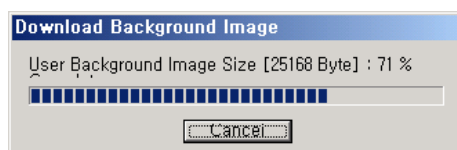
b. Click  icon at STB standby status. (see below)
 if you want to continue, Press “OK”. Otherwise Press “Cancel”.



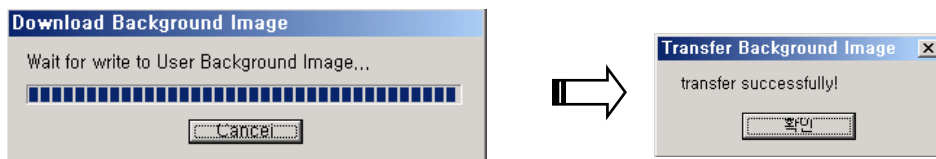
c. choose the file(*.mpg) that if you want to download.



d. downloading Background Image.

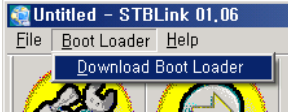


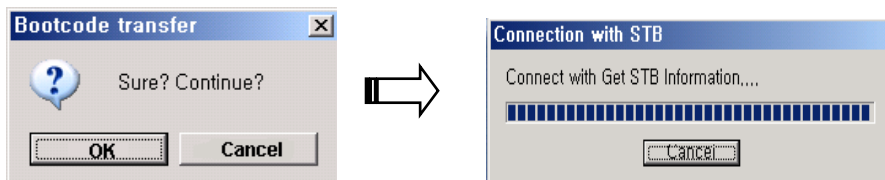
e. after userdata transferred, Waiting for writing image to Flash.



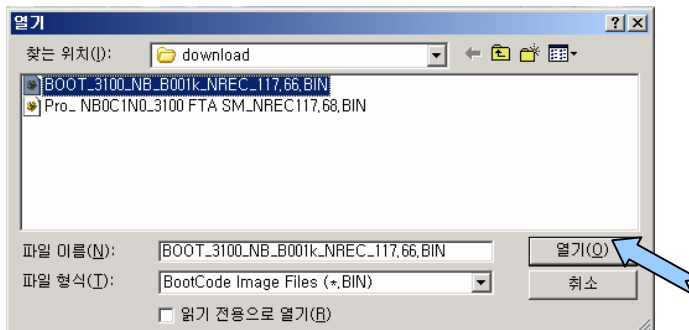
f. then reboot.

7. **Boot Loader** (Boot(Code) Loader download)

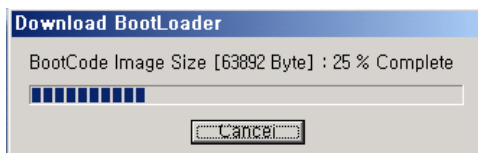
- a. Click  at STB standby Status. (see below)
- b. if you want to continue, Press “OK”. Otherwise Press “Cancel”.



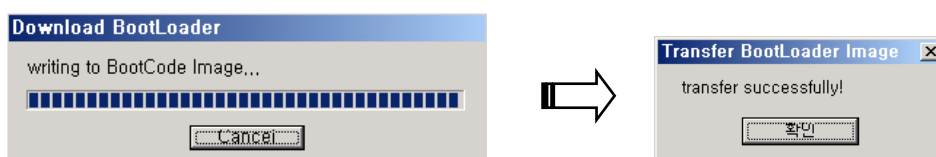
c. choose the file(*.BIN) that if you want to download.



d. downloading BootLoader.



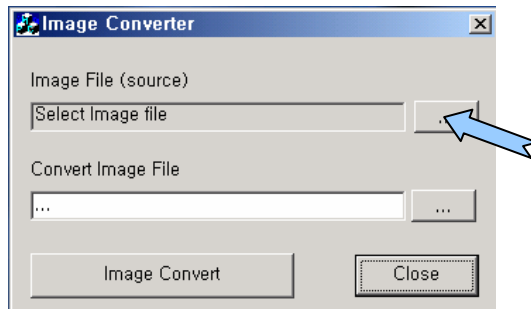
e. after userdata transferred, Waiting for writing image to Flash. then reboot.



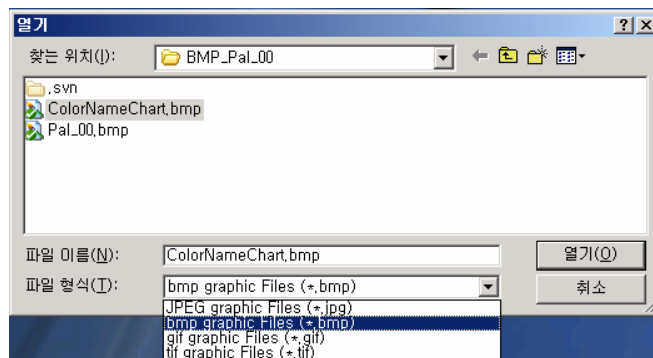
[pic2mpg image converter]

1. execute Pic2Mpg.exe program, you can see as below.

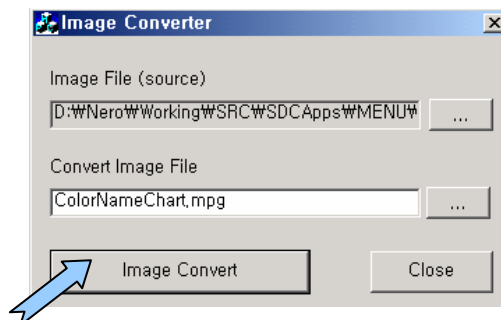
Click file-Open button for Image Convert.



2. Choose the file(jpg, bmp, gif, tif) that if you want to convert.



3. if you choose the file, Press [Image Convert] button.



4. then, it will be display as below.

Image Convert -> Converting... wait -> convert completed.

In current directory, it will be generate one file with *.mpg extension.

Ex) ColorNameChart.mpg